

566HO1246 MR MONTROSS

CAN DO -ET

Holstein 74414103 99% RHA-I *TC *TY *TV *TL *TD
 Born: November 18, 2014 aAa: 324156 DMS: 345
 A2A2

CDCB PTAs 8/20

GTPI +2384 +1649M -0.09% +36F 0.00% +52P 95% Rel.

Type +0.48 88% Rel. UDC +0.64 FLC -0.31

NM \$341 CM \$348 GM \$267 FE 117 EFI 10.0%

191 Dtrs./62 Herds DPR -1.4 PL +2.0 LIV -2.1 SCS 2.89

Wellness Traits MAST 92 LAME 103 MET 97 RP 97

KET 97 DA 98 DWP\$® \$154 WT -\$115

Calf Traits LIV 77 SCOURS 97 RES 96 CW -\$109

Milking Speed 100 Milking Temperament 105

Calving Ease / OBS / Daughter CE: 1.7% 600 2.4%

Actual Daughter Avg. Score (8/20): 78.9 AASC: 81.5

Actual Daughter Avg. Production (8/20): 30,832 3.7% 1129F 3.1% 947P

Sire: Bacon-Hill Montross-ET

Dam: Larcrest Canto-ET "VG-88" GMD, DOM
 3-00 2x 365d 39,660 4.0 1568 3.1 1243

MGS: Seagull-Bay Supersire-ET

MGD: Larcrest Cale-ET "VG-89" DOM
 2-02 2x 365d 41,710 5.3 2204 3.6 1487

3rd Dam: Larcrest Crimson-ET "EX-94" 3E, GMD, DOM

Life: 3503d 293,940 4.3 12,764 3.6 10,579

5-02 2x 365d 46,390 5.3 2448 3.5 1620

4th Dam: Larcrest Cosmopolitan "VG-87" GMD, DOM

2-04 2x 365d 30,931 4.1 1261 3.4 1120

5th Dam: Larcrest Oside Champagne-TW "EX-90" GMD, DOM

2-03 2x 365d 29,110 4.5 1322 3.5 1022

6th Dam: Larcrest Juror Chanel "EX-93" 3E, GMD, DOM

9-00 2x 365d 48,460 4.0 1943 3.2 1556

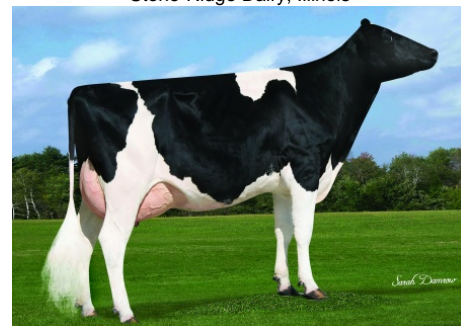
	USDA	-2	-1	0	1	2
Stature	0.05T					
Strength	0.60S			█		
Body Depth	0.51D			█		
Dairy Form	1.380			█		
Rump Angle	0.91S			█		
Rump Width	0.95W			█		
R Legs - Side View	-1.51S	█				
R Legs - Rear View	-0.35H			█		
Foot Angle	0.07S					
Feet & Legs Score	-0.22L			█		
Fore Attachment	0.15S			█		
Rear Udder Height	1.88H			█		
Rear Udder Width	1.73W			█		
Udder Cleft	0.27S			█		
Udder Depth	-0.75D	█				
F Teat Placement	-0.57W		█			
R Teat Placement	-0.07W					
Teat Length	1.16L			█		



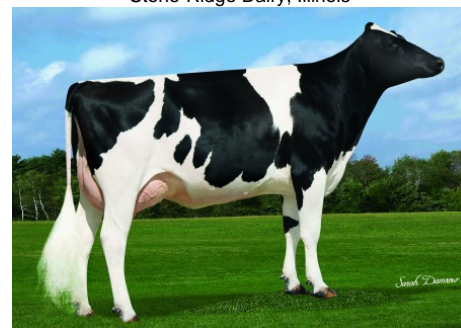
566HO1246 CAN DO



566HO1246 CAN DO Daughter:
 SRD-KD Can Do 4539
 Stone-Ridge Dairy, Illinois



566HO1246 CAN DO Daughter:
 SRD-KD Can Do 4840
 Stone-Ridge Dairy, Illinois



566HO1246 CAN DO Daughter:
 SRD-KD Can Do 4683
 Stone-Ridge Dairy, Illinois



International Protein Sires

WWW.IPSSIRES.COM Facebook: International Protein Sires
 608-524-8086 E-mail: contact@ipssires.com