

566HO1293 LADYS-MANOR

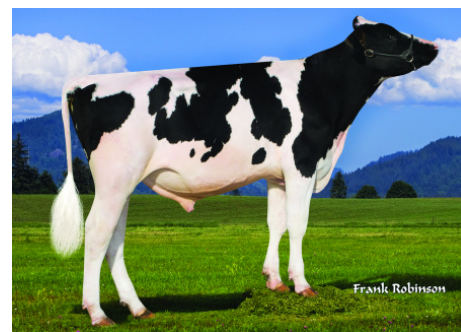
SEASAW -ET

Holstein 840003136040254 100% RHA-NA *TC *TY *TV *TL *TD
 Born: September 27,2016 aAa: 423156 DMS: 345/234
 A2A2

CDCB PTAs 8/21

GTPI +2600 +483M +0.09% +43F +0.04% +27P 91% Rel.
 Type +0.52 85% Rel. UDC +1.20 FLC +0.77
 NM \$560 CM \$575 GM \$535 FE 100 FSAV -126 EFI 9.6%
 68 Dtrs./28 Herds DPR +1.5 PL +4.3 LIV +3.4 HLIV +0.5 SCS 2.62
 Wellness Traits MAST 104 LAME 103 MET 99 RP 88
 KET 105 DA 102 DWP\$® \$472 WT \$89
 Calf Traits LIV 95 SCOURS 103 RES 97 CW -\$22
 Milking Speed 102 Milking Temperament 102
 Calving Ease / OBS / Daughter CE: 2% 241 2.5%
 Actual Daughter Avg. Score (8/21): 80.5 AASC: 83.8
 Actual Daughter Avg. Production (8/21): 31,103 4.2% 1301F 3.1% 977P

Sire: Wa-Del Yoder Bandares-ET
Dam: Ladys-Manor SSH Seashell-ET "VG-85"
 3-06 2x 364d 36,950 4.0 1469 3.0 1093
 Life: 1295d 117,270 4.1 4843 3.0 3490
MGS: Cogent Supershot
MGD: Seagull-Bay Mogul 1725-ET "EX-90"
 3-06 2x 305d 28,577 3.8 1083 2.9 829
3rd Dam: T-C-G Observer May-ET "VG-86"
 2-01 3x 192d 18,470 3.7 686 2.9 537
4th Dam: T-C-G Shottle Minnow "EX-94" 2E
 5-10 3x 365d 44,620 4.7 2101 2.7 1191
5th Dam: SeagullbayJJ Toys Mae "VG-87"
 1-11 3x 365d 35,040 3.1 1082 2.8 997
6th Dam: Seagull-Bay Oman Mirna-ET "VG-87" DOM
 2-01 3x 305d 28,850 3.6 1034 3.0 861



566HO1293 SEASAW



566HO1293 SEASAW Dam:
 Ladys-Manor SSH Seashell-ET "VG-85"



566HO1293 SEASAW Grandam:
 Seagull-Bay Mogul 1725-ET "EX-90"

	USDA	-2	-1	0	1	2
Stature	0.19T					
Strength	0.37S					
Body Depth	-0.49S					
Dairy Form	-0.98T					
Rump Angle	0.21S					
Rump Width	0.01W					
R Legs - Side View	-1.22S					
R Legs - Rear View	1.37S					
Foot Angle	0.76S					
Feet & Legs Score	0.62H					
Fore Attachment	1.63S					
Rear Udder Height	1.57H					
Rear Udder Width	1.28W					
Udder Cleft	-0.06W					
Udder Depth	1.13S					
F Teat Placement	0.42C					
R Teat Placement	0.28C					
Teat Length	-0.86S					



WWW.IPSSIRES.COM Facebook: International Protein Sires
 608-524-8086 E-mail: contact@ipssires.com