

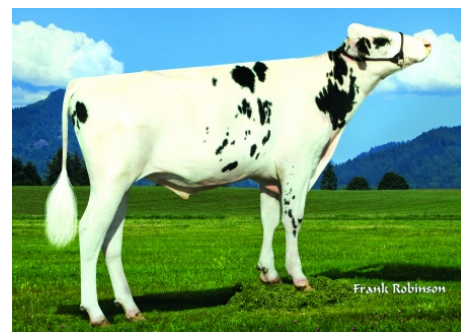
566HO1297 GIL-GAR FRZ

WINCHEL -ET

Holstein 144159686 99% RHA-I *TC *TY *TV *TL *TD HH3
 Born: May 1, 2017 aAa: 345216 DMS: 345/135
 A2A2 Kappa-Casein: AA

CDCB PTAs 4/24

GTPI +2634 +1390M +0.00% +53F -0.04% +32P 93% Rel.
Type +1.09 87% Rel. **UDC +1.31** **FLC +0.20**
NM \$700 **CM \$698** **GM \$669** **FE 160** **FSAV 197** **EFI 16.7%**
89 Dtrs./29 Herds **DPR +0.2** **PL +4.9** **LIV +1.9** **HLIV +0.7** **SCS 2.85**
Wellness Traits **MAST 96** **LAME 92** **MET 94** **RP 88**
KET 102 **DA 102** **DWP\$® \$355** **WT -\$198**
Calf Traits **LIV 99** **SCOURS 97** **RES 103** **CW -\$11**
 Milking Speed 108 Milking Temperament 105
 Calving Ease / OBS / Daughter CE: 2.0% 170 2.4%
 Actual Daughter Avg. Score (4/24): 80.6 AASC: 83.4
 Actual Daughter Avg. Production (4/24): 30,113 3.9% 1189F 3.0% 918P



566HO1297 WINCHEL



566HO1297 WINCHEL Daughter:
 SRD-KD Winchel 10382
 Owner: Stone-Ridge Dairy, Illinois

- Sire:** Melarry Josuper Frazzled-ET
Dam: Gil-Gar Delta Willie "VG-87"
 2-00 3x 365d 37,842 3.8 1454 2.9 1090
MGS: Mr Mogul Delta 1427-ET
MGD: Gil-Gar Uno Willow-ET "VG-85"
 2-10 3x 365d 36,773 4.2 1558 3.2 1163
3rd Dam: Butz-Butler Snow Whitney-ET "VG-85"
 2-02 3x 365d 34,610 4.5 1560 3.2 1110
4th Dam: Gil-Gar Jeeves Winnie "GP-83"
 4-01 3x 305d 28,300 4.1 1155 3.3 942
5th Dam: Gil-Gar G-Wyn Wensday-ET "GP-80" DOM
 2-02 2x 186d 16,080 4.4 711 3.2 517
6th Dam: Gil-Gar O-Man Sunami-ET "GP-82" GMD, DOM
 2-01 2x 365d 28,080 3.7 1039 3.0 841
7th Dam: Gil-Gar Addison Dame "VG-85"

	USDA	-2	-1	0	1	2
Stature	-0.20S			█		
Strength	-0.81F		█			
Body Depth	-0.62S		█			
Dairy Form	1.16O				█	
Rump Angle	0.38S				█	
Rump Width	0.21W				█	
R Legs - Side View	-0.01S					█
R Legs - Rear View	-0.27H			█		
Foot Angle	0.21S				█	
Feet & Legs Score	0.25H				█	
Fore Attachment	1.10S				█	
Rear Udder Height	1.68H				█	
Rear Udder Width	1.41W				█	
Udder Cleft	1.31S				█	
Udder Depth	0.75S				█	
F Teat Placement	1.15C				█	
R Teat Placement	1.62C				█	
Teat Length	-1.45S		█			



WWW.IPSSIRES.COM Facebook: International Protein Sires
 608-524-8086 E-mail: contact@ipsires.com