

566HO1301 LEANINGHOUSE KINGSTON -ET

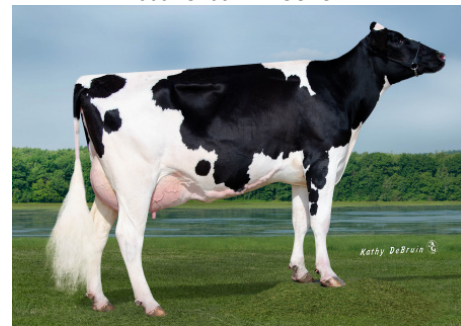
Holstein 840003138922945 99% RHA-I *TC *TY *TV *TL *TD
 Born: May 21, 2017 aAa: 243156 DMS: 234/345
 A2A2 Kappa-Casein: BB

CDCB PTAs 4/24

GTPI +2701	+118M	+0.31%	+91F	+0.16%	+49P	95% Rel.
Type +1.10	85% Rel.	UDC +1.03	FLC -0.10			
NM \$685	CM \$716	GM \$588	FE 204	FSAV -200	EFI 8.6%	
115 Dtrs./42 Herds		DPR -2.2	PL +3.0	LIV +1.5	HLIV +0.4	SCS 2.73
Wellness Traits		MAST 102	LAME 103	MET 104	RP 93	
		KET 104	DA 98	DWP\$® \$733	WT \$104	
Calf Traits		LIV 92	SCOURS 106	RES 97	CW -\$14	
Milking Speed 100		Milking Temperament 102				
Calving Ease / OBS / Daughter CE:		2.2%	169	2.4%		
Actual Daughter Avg. Score (4/24):		80.3	AASC: 83.3			
Actual Daughter Avg. Production (4/24):		28,798	4.4%	1279F	3.4%	965P



566HO1301 KINGSTON



566HO1301 KINGSTON Daughter:
 SRD-KD Kingston 10789
 Owner: Stone-Ridge Dairy, Illinois

- Sire:** Progenesis Harmony-ET
Dam: Jenniton Yoder Kacey-ET
MGS: Woodcrest Mogul Yoder-ET
MGD: Jenniton D-Tello Esther-ET "VG-85"
 4-09 2x 365d 33,660 4.1 1396 3.4 1152
3rd Dam: Jenniton M-O-M Savana-ET "EX-90" DOM
 Life: 1280d 101,550 4.4 4466 3.4 3466
 6-07 3x 344d 32,510 4.1 1348 3.1 1024
4th Dam: Jenniton Bolton Rowena-ET "EX-90" DOM
 7-02 2x 346d 29,340 4.2 1239 3.1 922
5th Dam: Jenniton Boss Iron Rosine "EX-90" DOM
 3-03 2x 365d 30,200 3.8 1140 2.9 869
6th Dam: Jenniton Rudolf Rosalind-ET "EX-90" 2E
 6-00 2x 365d 32,260 3.8 1232 3.1 1002
7th Dam: Jenniton Mark Reva-ET "VG-88" GMD

	USDA	-2	-1	0	1	2
Stature	0.99T					
Strength	0.51S					
Body Depth	0.44D					
Dairy Form	0.76O					
Rump Angle	-0.21H					
Rump Width	0.47W					
R Legs - Side View	0.50C					
R Legs - Rear View	0.00S					
Foot Angle	0.10S					
Feet & Legs Score	0.16H					
Fore Attachment	1.25S					
Rear Udder Height	1.35H					
Rear Udder Width	1.69W					
Udder Cleft	0.87S					
Udder Depth	0.96S					
F Teat Placement	1.05C					
R Teat Placement	1.14C					
Teat Length	-1.58S					



WWW.IPSSIRES.COM Facebook: International Protein Sires
 608-524-8086 E-mail: contact@ipssiress.com