

# 566HO1303 MISTY-MOOR

## PORSCHE -ET

Excellent-90

Holstein 840003144934001 99% RHA-I \*TC \*TY \*TV \*TL \*TD

Born: August 30, 2017 aAa: 315246 DMS: 345/135

A2A2

### CDCB PTAs 8/21

**GTPI +2665** +1136M -0.03% +36F +0.01% +37P 81% Rel.

Type +1.33 80% Rel. UDC +1.08 FLC +1.01

NM \$684 CM \$693 GM \$671 FE 138 FSAV 160 EFI 9.4%

GENOMIC DPR +1.8 PL +5.6 LIV +1.4 HLIV +1.4 SCS 2.67

Wellness Traits MAST 107 LAME 98 MET 102 RP 99

KET 103 DA 96 DWP\$® \$692 WT \$113

Calf Traits LIV 107 SCOURS 105 RES 106 CW \$53

Milking Speed 100 Milking Temperament 108

Calving Ease / OBS / Daughter CE: 2.8% 188 2.6%

**Sire:** DG Charley

**Dam:** Misty-Moor Delta Pailou-ET "VG-88"  
5-00 2x 365d 50,710 3.7 1860 3.0 1502

**MGS:** Mr Mogul Delta 1427-ET

**MGD:** Misty-Moor Ptrn Pilvar-ET "GP-83"  
3-02 3x 305d 25,860 3.9 1020 3.1 807

**3rd Dam:** All-Riehl Massey Perfume "VG-86" GMD, DOM  
Life: 1474d 135,130 3.3 4449 2.9 3873  
5-02 2x 365d 45,390 3.0 1378 2.7 1233

**4th Dam:** All-Riehl Throne Prime-ET "EX-90" GMD, DOM  
3-07 2x 365d 34,160 3.7 1247 2.9 979  
Life: 1535 115,930 3.6 4227 3.0 3432

**5th Dam:** Brookburn Rudolph Pansy-ET "EX-93" 3E DOM  
5-01 2x 365d 36,470 3.4 1245 3.0 1102

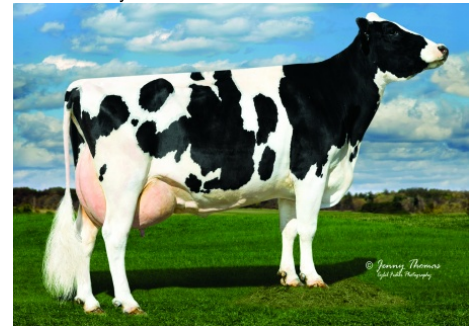
**6th Dam:** Brookburn Prissy Laban-TW "EX-90" DOM



566HO1303 PORSCHE



566HO1303 PORSCHE Dam:  
Misty-Moor Delta Pailou-ET "VG-86"



566HO1303 PORSCHE's 3rd Dam:  
All-Riehl Massey Perfume "VG-86"

	USDA	-2	-1	0	1	2
Stature	0.90T					
Strength	0.28S					
Body Depth	0.39D					
Dairy Form	1.11O					
Rump Angle	0.49S					
Rump Width	0.17W					
R Legs - Side View	1.08C					
R Legs - Rear View	0.84S					
Foot Angle	0.94S					
Feet & Legs Score	1.25H					
Fore Attachment	1.51S					
Rear Udder Height	1.47H					
Rear Udder Width	1.07W					
Udder Cleft	0.80S					
Udder Depth	0.97S					
F Teat Placement	1.14C					
R Teat Placement	0.99C					
Teat Length	-0.40S					



International Protein Sires

WWW.IPSSIRES.COM Facebook: International Protein Sires  
608-524-8086 E-mail: contact@ipsires.com