

566HO1332 MELARRY

WHY NOT -ET

Holstein 840003206289318 99% RHA-I *TC *TY *TV *TL *TD
 Born: February 8, 2019 aAa: 423615 DMS: 345/234
 A1A2 Kappa-Casein: AB

CDCB PTAs 4/24

GTPI +2548	+365M	+0.05%	+27F	+0.02%	+17P	91% Rel.
Type +0.52	87% Rel.	UDC +1.40	FLC +0.87			
NM \$572	CM \$583	GM \$515	FE 73	FSAV 15	EFI 20.2%	
GENOMIC	DPR +0.9	PL +5.9	LIV +4.2	HLIV +1.4	SCS 2.62	
Wellness Traits	MAST 109	LAME 105	MET 108	RP 100		
	KET 107	DA 105	DWP\$® \$814	WT \$315		
Calf Traits	LIV 107	SCOURS 112	RES 110	CW \$92		
Milking Speed 96	Milking Temperament 97					
Calving Ease / OBS / Daughter CE:	2.6%	133	2.5%			

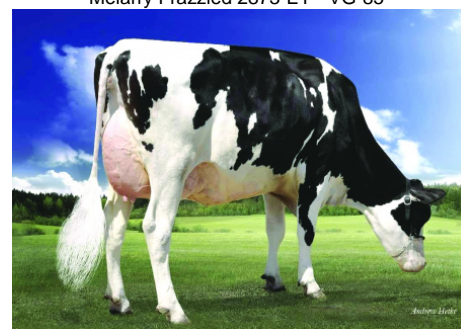
Sire: Fustead S-S-I Solution-ET
Dam: Melarry Frazzled 2873-ET "VG-85"
 3-09 2x 365d 32,810 4.2 1393 3.2 1055
MGS: Melarry Josuper Frazzled-ET
MGD: Melarry Damaris Whilma-ET "EX-90"
 3-07 2x 365d 35,780 3.8 1352 3.2 1159
 Life: 1273d 118,070 3.7 4418 3.2 3822
3rd Dam: Melarry Shan Whinn-ET "VG-85"
 Life: 1780d 144,420 4.1 5974 3.4 4912
 6-03 2x 365d 32,560 4.5 1462 3.3 1003
4th Dam: Butz-Butler Snow Whitney-ET "VG-85"
 2-02 3x 365 34,610 4.5 1560 3.2 1110
5th Dam: Gil-Gar Jeeves Winnie "GP-83"
 4-01 3x 305d 28,300 4.1 1155 3.3 942
6th Dam: Gil-Gar G-Wyn Wensday-ET "GP-80" DOM



566HO1332 WHY NOT



566HO1332 WHY NOT Dam:
 Melarry Frazzled 2873-ET "VG-85"



566HO1332 WHY NOT Grandam:
 Melarry Damaris Whilma-ET "EX-90"

	USDA	-2	-1	0	1	2
Stature	0.18T					
Strength	-0.37F					
Body Depth	-1.59S					
Dairy Form	-1.74T					
Rump Angle	-0.03H					
Rump Width	0.27W					
R Legs - Side View	-0.17S					
R Legs - Rear View	0.60S					
Foot Angle	1.33S					
Feet & Legs Score	0.88H					
Fore Attachment	2.14S					
Rear Udder Height	1.04H					
Rear Udder Width	0.40W					
Udder Cleft	0.63S					
Udder Depth	2.46S					
F Teat Placement	0.93C					
R Teat Placement	1.24C					
Teat Length	-0.64S					



WWW.IPSSIRES.COM Facebook: International Protein Sires
 608-524-8086 E-mail: contact@ipsires.com