

566HO1346 LEANINGHOUSE Acrat 27199

LEAN -ET

Good Plus-82

Holstein 840003206219223 99% RHA-I *TC *TY *TV *TL *TD

Born: August 23, 2019 aAa: 243516 DMS: 234/246

A1A2

CDCB PTAs 8/21

GTPI +2814 +1089M +0.07% +63F +0.02% +39P 78% Rel.

Type +1.42 77% Rel. UDC +1.81 FLC +0.51

NM \$858 CM \$866 GM \$831 FE 191 FSAV 228 EFI 9.8%

GENOMIC DPR +1.3 PL +6.3 LIV +1.4 HLIV +1.1 SCS 2.79

Wellness Traits MAST 96 LAME 94 MET 104 RP 102

KET 100 DA 95 DWP\$® \$528 WT -\$75

Calf Traits LIV 104 SCOURS 97 RES 92 CW -\$13

Milking Speed 105 Milking Temperament 101

Calving Ease / OBS / Daughter CE: 2.2% GEN 1.8%

Sire: Mr Frazzled Aristocrat-ET

Dam: Leaninghouse Pnncl 23943-ET

MGS: S-S-I Modesty Pinnacle-ET

MGD: Precision Delta Laker-ET "VG-88" EX-MS

2-02 2x 358d 28,910 3.5 1017 3.3 946

3rd Dam: Nordic-Ridge Supers Legacy "VG-88" GMD, DOM

3-09 3x 365d 42,700 3.9 1653 3.1 1332

4th Dam: Nordic-Ridge Bolton Lexi "EX-90" 2E GMD, DOM

4-07 2x 365d 35,850 3.8 1352 3.0 1071

5th Dam: Nordic-Ridge Champion Lexus "VG-87"

5-02 2x 365d 40,610 3.2 1305 3.3 1329

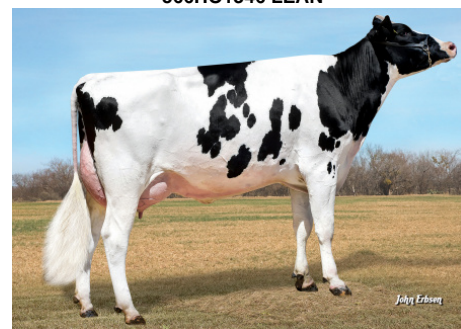
6th Dam: Ebe-Tide Lizzie "VG-87"

5-06 2x 365d 25,360 4.1 1052 3.5 882

7th Dam: Maplecett Ebe-Tide Libby "EX-92" 3E



566HO1346 LEAN



566HO1346 LEAN Grandam:
Precision Delta Laker-ET "VG-88" EX-MS

	USDA	-2	-1	0	1	2
Stature	0.87T				█	
Strength	-0.15F			█		
Body Depth	0.07D			█		
Dairy Form	1.06O				█	
Rump Angle	0.70S				█	
Rump Width	-0.27N			█		
R Legs - Side View	0.00C					
R Legs - Rear View	0.30S				█	
Foot Angle	0.82S				█	
Feet & Legs Score	0.74H				█	
Fore Attachment	2.23S				█	█
Rear Udder Height	2.55H				█	█
Rear Udder Width	1.73W				█	
Udder Cleft	0.43S				█	
Udder Depth	1.97S				█	
F Teat Placement	1.02C				█	
R Teat Placement	0.85C				█	
Teat Length	-0.91S		█			



International Protein Sires

WWW.IPSSIRES.COM Facebook: International Protein Sires
608-524-8086 E-mail: contact@ipsires.com