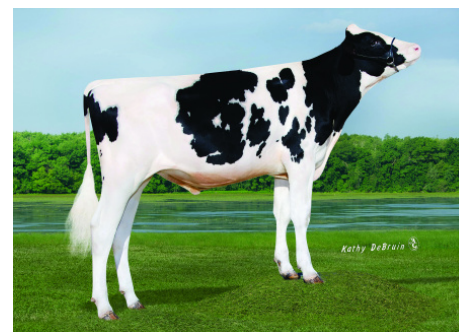


# 566HO1359 SOLUM

## TELEMARK PP -ET \*RC \*PP



566HO1359 TELEMARK \*PP

Holstein 840003235979057 99% RHA-I \*RC \*PP \*TC \*TY \*TV \*TL \*TD  
 Born: September 25, 2021 aAa: 423156 DMS: 561/126  
 A2A2 Kappa-Casein: AB

### CDCB PTAs 4/24

**GTPI +2773** +236M +0.25% +81F +0.13% +44P 81% Rel.  
**Type +1.10** 80% Rel. **UDC +1.88** **FLC +0.61**  
**NM \$814** **CM \$835** **GM \$765** **FE 218** **FSAV 146** **EFI 14.4%**  
**GENOMIC** **DPR -0.8** **PL +4.4** **LIV +1.5** **HLIV +0.5** **SCS 2.98**  
**Wellness Traits** **MAST 102** **LAME 102** **MET 102** **RP 102**  
**KET 109** **DA 100** **DWP\$® \$904** **WT \$121**  
**Calf Traits** **LIV 95** **SCOURS 101** **RES 106** **CW -\$2**  
 Milking Speed 104 Milking Temperament 104  
 Calving Ease / OBS / Daughter CE: 2.1% GEN 1.7%

**Sire:** TTM SS Renegade Extra-P-ET  
**Dam:** Solum 2060-ET \*RC \*PP "GP-84" VG-86-MS  
 2-03 2x 365d 23,210 4.2 983 3.5 816  
**MGS:** ABS Presley-PP-ET  
**MGD:** Solum 1872-ET "VG-87"  
 2-05 2x 365d 28,430 4.6 1320 3.5 1009  
**3rd Dam:** Solum 1697 Cindy-ET  
**4th Dam:** Solum 1538 EP Cinderella-ET "EX-92" 2E  
 2-00 2x 320d 23,050 4.2 964 3.5 806  
**5th Dam:** Solum 1016 Chapi Colet "EX-91" 2E  
 6-03 2x 365d 36,324 4.6 1661 3.5 1254  
**6th Dam:** Solum Champy Liza 853-TW "VG-89"  
 1-11 2x 365d 26,630 3.6 957 3.0 799  
**7th Dam:** Solum Philip 415 Creamp Nik "EX-90" DOM  
**8th Dam:** Solum Grant 82 Star Nikki

	USDA	-2	-1	0	1	2
Stature	0.10T					
Strength	-0.46F					
Body Depth	-0.59S					
Dairy Form	0.32O					
Rump Angle	-0.58H					
Rump Width	0.17W					
R Legs - Side View	0.83C					
R Legs - Rear View	0.59S					
Foot Angle	-0.19L					
Feet & Legs Score	0.67H					
Fore Attachment	1.83S					
Rear Udder Height	2.45H					
Rear Udder Width	1.65W					
Udder Cleft	0.79S					
Udder Depth	2.30S					
F Teat Placement	-0.35W					
R Teat Placement	0.14C					
Teat Length	-0.88S					



WWW.IPSSIRES.COM Facebook: International Protein Sires  
 608-524-8086 E-mail: contact@ipssires.com