

566JE104 PINE-TREE KWYNN

CUATRO -ET

Jersey 67731388 BBR 100% JH1F JNFSF
 Born: November 17, 2016 aAa: 321456 DMS: 126/246
 A2A2

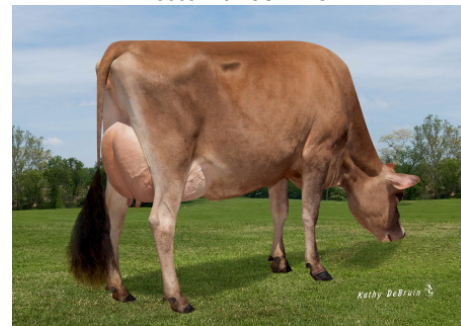
CDCB PTAs 8/21

JPI +43	-430M	+0.11%	+3F	+0.09%	+2P	80% Rel.
Type +1.50	80% Rel.	GJUI +14.5	NM \$150	CM \$162	GM \$134	
GENOMIC		DPR +0.7	PL +2.3	LIV +0.5	SCS 2.83	EFI 8.0%

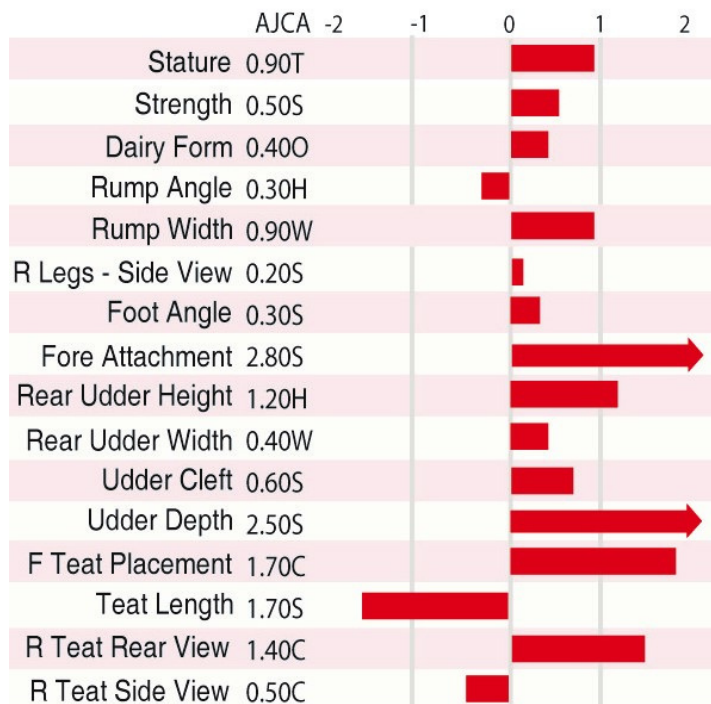
Sire: CDF Karbala Kwynn
Dam: Pine-Tree Lexicon Frosty-ET "VG-86"
 1-11 3x 135d 8,650 4.1 356 3.2 278
MGS: Dutch Hollow Lexicon-P
MGD: Hi-Land Zipper Fluffy "VG-84"
 3-00 3x 305d 21,230 5.7 1208 3.7 779
3rd Dam: Hi-Land Allstar Falls
 2-00 2x 305d 14,720 6.0 878 3.9 567
4th Dam: Hi-Land Bold Daniel Frigate "VG-87"
 6-07 2x 305d 23,030 4.8 1112 3.4 786
5th Dam: Hi-Land Ainge Frazzle "EX-90"
 3-11 2x 305d 19,510 4.7 919 3.5 679
6th Dam: Hi-Land Berretta Frazier "VG-88"
 6-05 2x 305d 22,550 4.5 1013 3.5 787
7th Dam: Hi-Land Lester Feet "D-77"



566JE104 CUATRO



566JE104 CUATRO Dam:
 Pine-Tree Lexicon Frosty-ET "VG-86"



International Protein Sires

WWW.IPSSIRES.COM Facebook: International Protein Sires
 608-524-8086 E-mail: contact@ipssires.com