

6HO1157 BREMER PLANET MADE RIGHT

Very Good-88

Holstein 64582836 100% RHA-NA *TC *TY *TV *TL *TD
Born: March 11, 2010 aAa: 432165 DMS: 135/123
A1A2

CDCB PTAs 4/21

GTPI +1963 -335M +0.07% +6F -0.03% -18P 96% Rel.

Type +0.60 92% Rel. UDC +1.57 FLC -0.30

NM \$56 CM \$44 GM \$11 FE -3 FSAV 173 EFI 8.0%

231 Dtrs./131 Herds DPR -2.1 PL +1.1 LIV +1.3 HLIV +0.8 SCS 2.96

Wellness Traits MAST 104 LAME 103 MET 102 RP 95

KET 98 DA 101 DWP\$® \$159 WT \$109

Calf Traits LIV 101 SCOURS 103 RES 102 CW \$14

Milking Speed 106 Milking Temperament 99

Calving Ease / OBS / Daughter CE: 1.7% 384 2%

Actual Daughter Avg. Score (4/21): 78.5 AASC: 81.1

Actual Daughter Avg. Production (4/21): 27,386 3.7% 1025F 3% 824P

Sire: Ensenada Taboo Planet-ET

Dam: Fustead Goldwyn Madessa-ET "VG-86"
3-07 2x 365d 30,910 4.1 1257 2.8 863

MGS: Braedale Goldwyn

MGD: Regancrest-MWS Brit-ET "EX-90"
1-11 2x 365d 31,080 3.4 1066 2.8 866

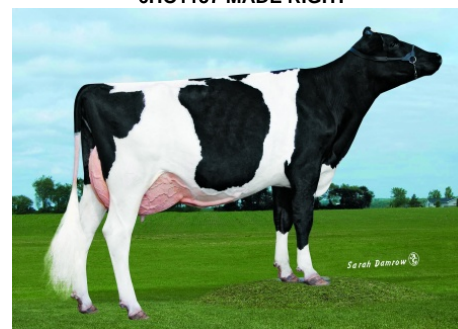
3rd Dam: MS Regancrest Patrn Dee-ET "VG-88" DOM
2-03 2x 365d 30,670 4.0 1238 3.4 1031

4th Dam: Regancrest Melwood Della-ET "EX-90" GMD, DOM

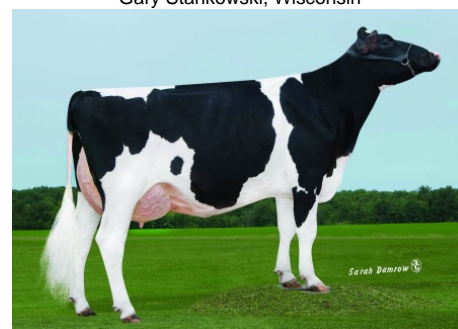
5th Dam: Snow-N Denises Dellia "EX-95" GMD, DOM



6HO1157 MADE RIGHT



MADE RIGHT Daughter:
TKGTD Made Right Sherry 450
Gary Stankowski, Wisconsin



MADE RIGHT Daughter:
Wild View Made Right Goards
Charles Huth, Wisconsin

	USDA	-2	-1	0	1	2
Stature	-1.06S					
Strength	-1.30F					
Body Depth	-0.97S					
Dairy Form	0.400					
Rump Angle	-1.25H					
Rump Width	0.53W					
R Legs - Side View	1.14C					
R Legs - Rear View	-0.48H					
Foot Angle	-1.31L					
Feet & Legs Score	-0.40L					
Fore Attachment	1.33S					
Rear Udder Height	0.88H					
Rear Udder Width	1.50W					
Udder Cleft	1.90S					
Udder Depth	1.27S					
F Teat Placement	1.11C					
R Teat Placement	2.08C					
Teat Length	-0.88S					



WWW.IPSSIRES.COM Facebook: International Protein Sires
608-524-8086 E-mail: contact@ipssires.com